

CIVILISATIONS



BRUSSELS ART FAIR

WINTER FAIR 2024
CATALOGUE

THIS ONLINE CATALOGUE IS INTERACTIVE

All items presented are for sale and you can directly contact the concerned dealer for any inquiry by clicking on the e-mail address.

Dear Colleagues and Art Enthusiasts,

We are delighted to present the catalogue of the Winter Edition of CIVILISATIONS Brussels Art Fair 2024, a distinctive initiative that unites galleries and dealers in Asian, Tribal, and Oriental art from around the globe.

Organised by the Belgian non-profit association CIVILISATIONS ASBL, this event encompasses a digital platform showcasing exquisite artworks, alongside a biannual art fair located in the vibrant Sablon neighbourhood—widely regarded as Brussels' premier art and antiques district.

As you embark on our online catalogue, featuring participants of the Winter Editions of Civilisations Brussels Art Fair in January 2024, we extend an invitation to connect with us on Instagram (@civilisations.brussels). Following our accounts will keep you informed about our latest offerings and updates.

The catalogue will be updated with new members and artworks before each fair in January and June. For those seeking additional information about specific pieces, our members are readily available to assist.

Each item in our collection undergoes meticulous scrutiny with an independent committee of experts carefully examining high-resolution pictures. We maintain a rigorous policy, rejecting artworks that raise even the slightest doubt regarding authenticity or fail to meet our uncompromising quality standards.

Our vetting experts, recognised specialists in their respective fields, can provide comprehensive condition reports upon request. Prior to being showcased at the fair in Brussels, all artworks undergo a thorough physical vetting process by CIVILISATIONS to ensure authenticity and high quality.

We cordially invite you to immerse yourself in the artworks showcased within this catalogue.

Members of the Board

Arie Vos
Carlo Cristi
Jacques Lebrat
Jo De Buck
Karim Grusenmeyer
Serge Schoffel

EXHIBITORS

Adrian Schlag Tribal Art Classics	6
Asian Arts Company - Carlo Cristi	10
Bergmans Scott Fine Arts	14
Bruce Frank Primitive Art Gallery	18
David Serra Fine Art Tribal	22
Diane Hall Artifacts	28
Duende Art Projects	32
Galerie Bruno Frey	36
Galerie Christophe Rolley	40
Galerie Frank Van Craen	44
Galerie Patrick & Ondine Mestdagh	50
Galerie Olivier Castellano	56

EXHIBITORS

Galerie Punchinello	60
Graziella Semerciyan Gallery	64
Gregg Baker Asian Art Gallery	68
Grusenmeyer-Woliner Gallery	78
Jo De Buck Tribal Arts	82
Joaquin Pecci Tribal Art	86
Kitsune Japanese Art	90
Olivier Larroque	94
Raphaël Sevette	98
Voyageurs & Curieux	102
Renaud Vanuxem	108
Zubek Gallery	112

ADRIAN SCHLAG TRIBAL ART CLASSICS

EXHIBITION DURING THE FAIR

L'Ancienne Nonciature
7 Rue des Sablons
1000 Brussels

T. +34 617 666 098
E. adrian@schlag.net
W. <http://tribalartclassics.com>
I. @adrianschlag

PASSPORT MASK

Civilization We
Ivory Coast
Wood, metal, textile, kaolin
Height 12.5 cm

Provenance:
• Giovanni Franco Scanzi.



VETTED BY

CIVILISATIONS



TUMOGANI BRASS AND IRON STAFF

Senufo civilisation
Ivory Coast
Height 115 cm

Provenance:

- Private German collection.



STANDING FIGURE

Songye / Tetela civilisation
Wood, textile, beads
Height 46.6 cm

Provenance:

- German Private collection.

ASIAN ARTS COMPANY - CARLO CRISTI

EXHIBITION DURING THE FAIR

By appointment
Place des Martyrs
1000 Brussels

T. +39 335 593 3732
E. cristi@asianartscompany.com
W. www.asianart.com/carlocristi
I. @carlo.cristi



BODHISATTVA

Bangladesh
Gupta period
5th - 6th century
Terracotta
Height 37 cm
TL tested

VETTED BY

CIVILISATIONS



VAJRAVARAHI MANDALA

West Tibet
12th century
Distemper on cotton
Dimensions: 88 x 68 cm



BUDDHA VAJRASANA

Eastern India
Pala Period
11th - 12th century
Copper alloy
Height 24 cm

BERGMANS SCOTT FINE ARTS

EXHIBITION DURING THE FAIR

Chimara Antiques
23 Rue Watteu
1000 Brussels

T. +32 475 733 376
E. scottbergmans@hotmail.com
W. www.proantic.com
I. [@bergmans_scott_fine_arts](https://www.instagram.com/bergmans_scott_fine_arts)

VETTED BY

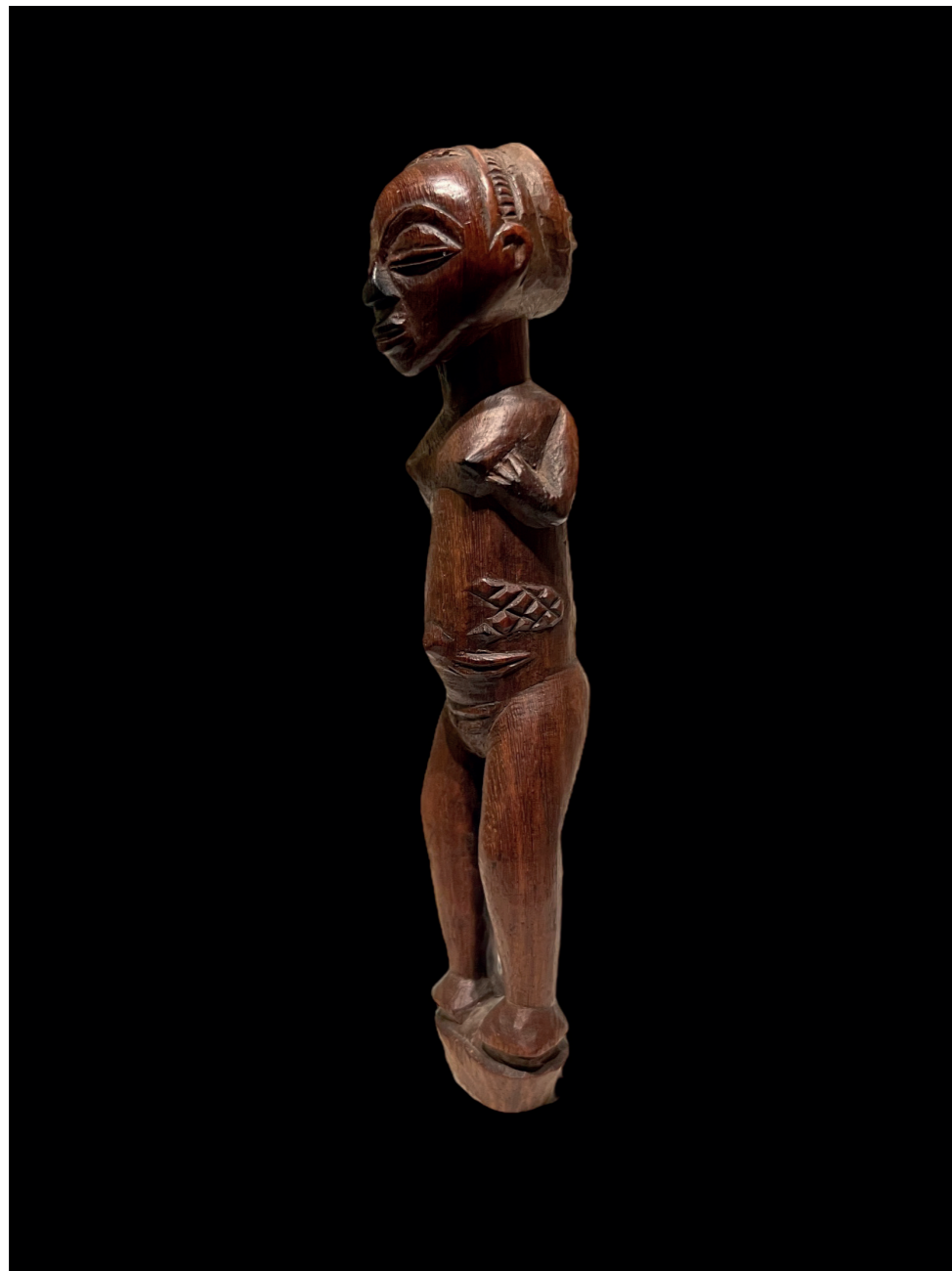
CIVILISATI**ONS**

A HOLO FACE MASK

Provenance:

- Belgian private collection.





A FINE WOODEN LUBA FEMALE FIGURE

Provenance:

- Belgian missionary collection.
- Dutch private collection.



A FIGURATIVE PENDE CUP

Provenance:

- Marc Leo Felix, Brussels.
- Private collection.

BRUCE FRANK PRIMITIVE ART GALLERY

EXHIBITION DURING THE FAIR

Galerie Mestdagh
29 Rue des Minimes
1000 Brussels

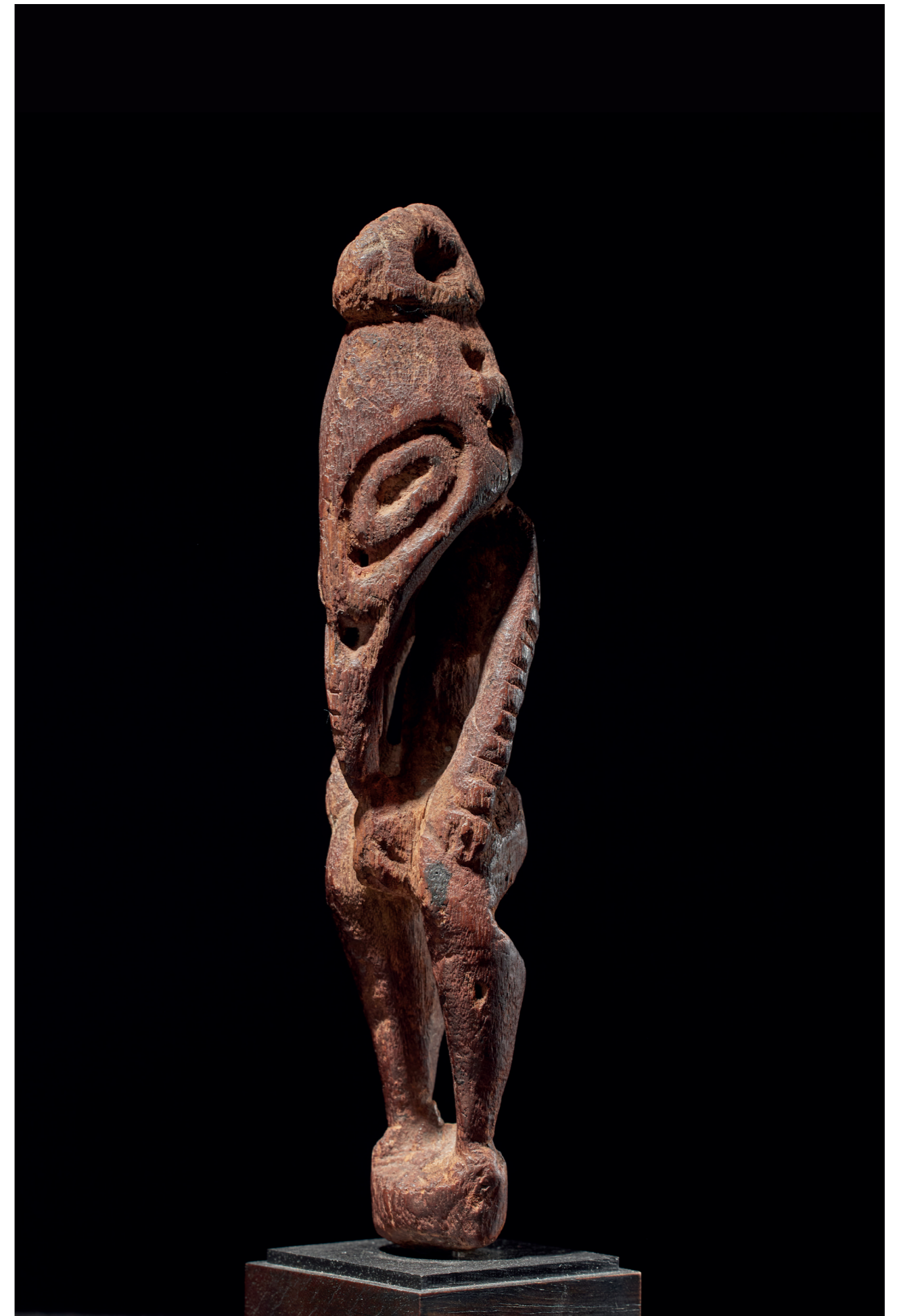
T. +1 917 733 9589
E. bruce@brucefrankprimitiveart.com
W. <https://brucefrankprimitiveart.com/>
I. @brucefrankprimitiveart

MALE FIGURE

East Sepik Province
Sepik-Ramu estuary
Papua New Guinea
19th century
Height 20.3 cm

Provenance:

- German Colonial collection.
- Frank Reiter, Berlin.
- Loed and Mia Van Bussel, Amsterdam.
- Patrick De Backer, Temse, Belgium.



VETTED BY

CIVILISATIONS



MORTAR

Murik Lakes
Papua New Guinea
19th - Early 20th century
Height 16.5 cm

Provenance:

- Stanley Marcus Collection, Dallas.
- Jolika collection, Marcia and John Friede, Rye.

Published:

- Wardwell, Allen, "The Art of the Sepik River", The Art Institute of Chicago, 1971, fig. 31.

Exhibited:

- The Art Institute of Chicago, "The Art of the Sepik River", October 16 - November 28, 1971.



CONTAINER

Kayan Dayak
Borneo
Indonesia
19th century
Gourd, deer antler and cord
Height 22.2 cm

Provenance:

- Collected by photographer Jean Demmeni during one of the expeditions with A.W. Nieuwenhuius within Central Boreno, between 1894-1900.
- W.O.J. Nieuwenkamp, The Netherlands, acquired from above.
- By descent to family member.

DAVID SERRA FINE ART TRIBAL

EXHIBITION DURING THE FAIR

Galerie Philippe Heim
16 Rue Ernest Allard
1000 Brussels

T. +34 667 525 597
E. galeria@davidserra.es
W. www.davidserra.es
I. [@galeria_david_serra](https://www.instagram.com/galeria_david_serra)

KARANWEMBA MASK

Mossi
Burkina Faso
Yatenga Region
Estimated period: Early 20th century
Wood
Height 127 cm

Provenance:

- J.J. Klejman, New York.
- Amy & Elliot Lawrence, New York (acquired in 1967).



VETTED BY

CIVILISATIONS



TEFALIPITYA STAFF

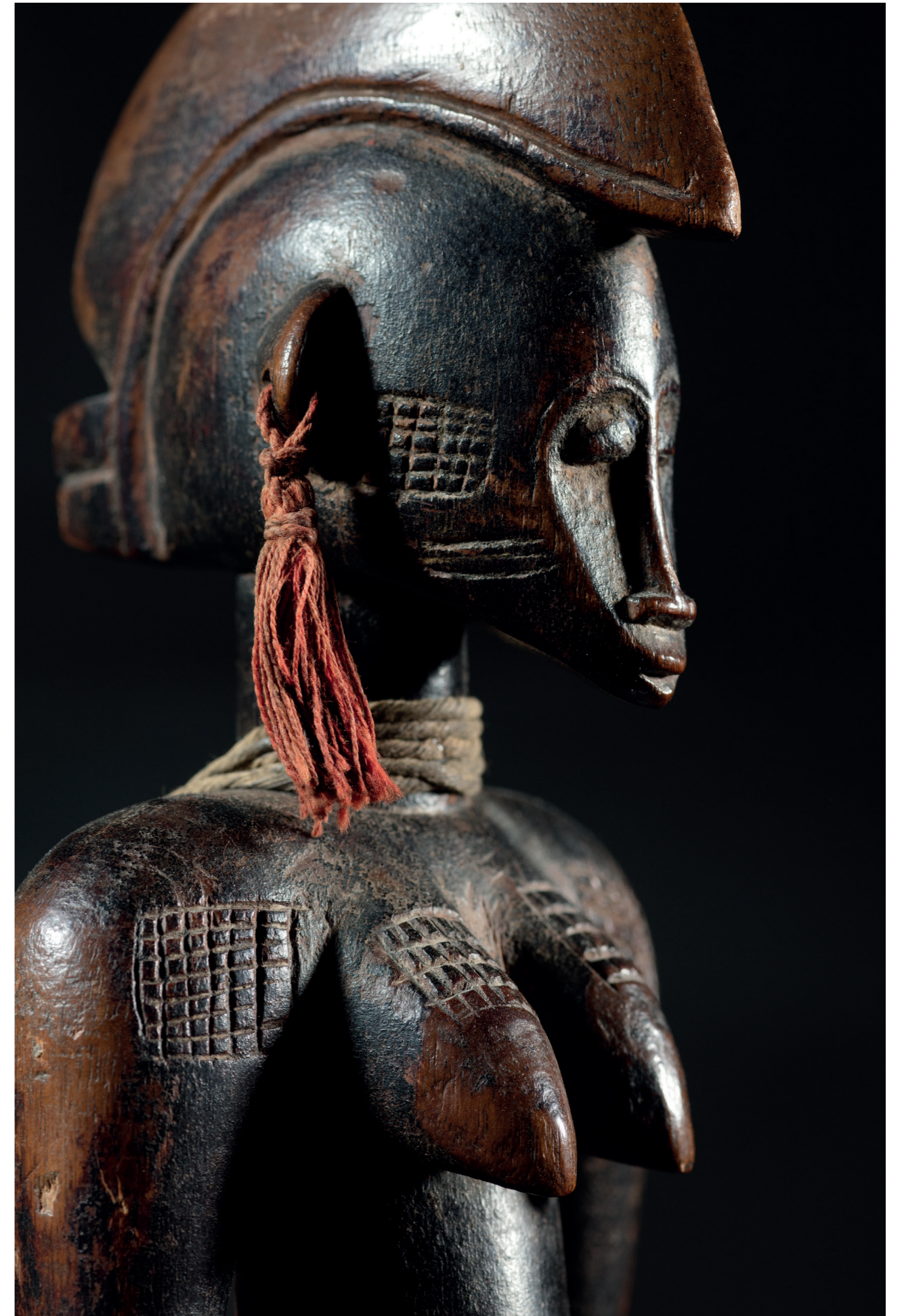
Senoufo
Ivory Coast, Korhogo Region
Estimated period: Early 20th century
Wood, natural fibers and shell
Height 124 cm

Provenance:

- Simon Escarré Collection, France.
- Loed & Mia van Bussel Collection, Netherlands.
- Helmut & Marianne Zimmer, Switzerland (acquired before 1988).

Publications and exhibitions:

- Expo cat.: "Die Kunst der Senoufo aus Schweizer Sammlungen", by Förster (Till), Zürich: Museum Rietberg, 1988:23, #7.
- Expo cat.: "Meisterwerke afrikanischer Plastik aus Schweizer Privatbesitz", Essay by Ezio Bassani, Zug: Kunshaus Zug/Wiese Verlag, 1995:68, #54.

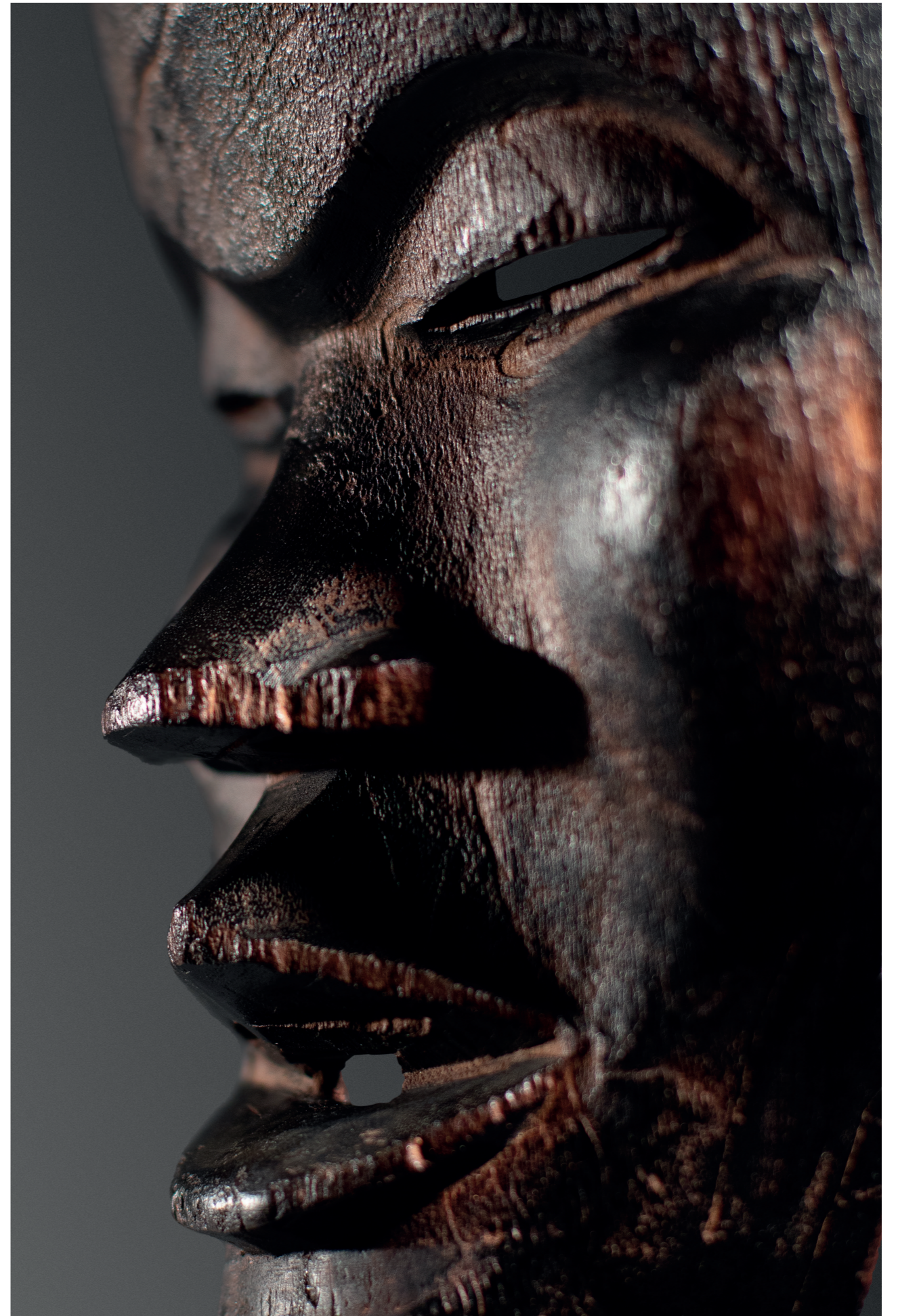




DAN MASK

Ivory Coast
Estimated period: Early 20th century
Wood
Height 21.5 cm

Provenance:
• Private Collection, U.K.



DIANE HALL ARTIFACTS

EXHIBITION DURING THE FAIR

Jo de Buck Gallery
43 Rue des Minimes
1000 Brussels

T. +32 473 135 815
E. diane@dianehallartifacts.com
I. [@diane_hall_artifacts](https://www.instagram.com/diane_hall_artifacts)

VETTED BY

CIVILISATIONS

A ROYAL HEADDRESS MPELET

Bamum Kingdom
Cameroon
Late 19th century
Cotton, glass beads, cowrie shell
Dimensions: 30 cm x 26 cm

Provenance:

- Charles Ratton.





A PAIR OF BRASS ANKLETS OGBA

Nigeria
Early 20th century
With engraved decoration
Worn by high class Igbo women
Diameter: 36 cm



A BOGOLAN WOMAN'S WRAPPER

Bamana people
Central Beledugu area
Mali
Circa 1930's
Strip woven hand spun cotton
Dimensions: 74 cm x 121 cm

Provenance:

- Collected by F. H. Lem in 1934-1935.
- Charles Ratton.

DUENDE ART PROJECTS
BRUNO CLAESSENS

EXHIBITION DURING THE FAIR

MiniMania - Small Sculptures from Africa

Gallery Harmakhis
3 Rue des Minimes
1000 Brussels

T. +32 485 982 036
E. bruno@duendeartprojects.com
W. www.duendeartprojects.com
I. @duendeartprojects

DRINKING CUP

The Wongo Master of the Pursed Horizontal Lips
Democratic Republic of Congo
Early 20th century
Wood
Height 15 cm

Provenance:

- Hélène Leloup, Paris, France, 1991.
- Prof. Boris Magasanik, Cambridge, USA.
- By descent through family, -2014.
- Private Collection, Antwerp, Belgium, 2014-2023.

Image courtesy of Duende Art Projects



VETTED BY

CIVILISATIONS



CALABASH WITH STOPPER

Anonymous Pende artist
Democratic Republic of Congo
Early 20th century
Wood, fibers, calabash, metal
Height 28 cm

Provenance:

- Colonial collection, Belgium.
- Michel Van den Dries, Gavere, Belgium.
- Sheherazade Bourahli collection, Belgium.
- Pascal Vernimmen, Ghent, Belgium.
- Duende Art Projects, Antwerp, Belgium, 2023.
-

Image courtesy of Duende Art Projects



HIPPOPOTAMUS

Anonymous Sao artist
Chad
16th century or earlier
Terracotta
Height 9.5 cm

Provenance:

- Collected by Christine Liehman in Chad during the 1960s - 1970s.
- Yannick de Hondt, Bruges, Belgium, ca. 1998 - 2023.
- Duende Art Projects, Antwerp, Belgium, 2023.

Image courtesy of Duende Art Projects

GALERIE BRUNO FREY

EXHIBITION DURING THE FAIR

Chambre Royale des Antiquaires Belges
32 Rue Ernest Allard
1000 Bruxelles

T. +33 6 20 70 10 01
E. galerieh@free.fr
W. <https://brunofrey.fr>
I. @galerie_bruno_frey

WÉ/ GUÉRÉ MASK

Ivory Coast
Presumed period: early 20th century
Medium-hard wood, fine old patina, pigments, metal
Height 26 cm

Image courtesy of Joseph Frey, Lyon



VETTED BY

CIVILISATIONS



MENDE

“Kamba” female figure.
Sierra Leone
Presumed period: early 20th century
Height 46 cm

Semi-hard wood with a black lacquered patina from use.

Provenance:
• Louis Cotten (1874/1956), colonel of the colonial infantry.

Image courtesy of Joseph Frey, Lyon



BAOULE BEGGING MONKEY

Ivory Coast
Hardwood, thick crusty patina from use, cloth loincloth around the waist
Height 54 cm

Provenance:
- French colonial collection.

The surface, particularly above the head, is covered with a thick sacrificial crusty patina, the residue of offerings made: chicken blood, egg shells, millet beer, reflecting the power of this “amwin”, an object of power, part of the initiation society whose authority it relayed.

Image courtesy of Joseph Frey, Lyon

GALERIE CHRISTOPHE ROLLEY

EXHIBITION DURING THE FAIR

Chambre Royale des Antiquaires Belges
32 Rue Ernest Allard
1000 Bruxelles

T. +33 6 80 15 42 02
E. c.rolley@free.fr
I. @christophe_rolley

DAN MASK

Ivory Coast
Estimated date: early 20th century
Wood, natural pigments
Height 22.5 cm

Provenance:

- French private collection

Of delicate proportions, the sensitive face with a pointed chin, protruding lips with a prominent philtrum and naturalistic nose framed by circular eyes and a gently sloping forehead showing a single nail at the crest, the perimeter pierced for attachment.

Fine aged medium brown surface with areas of dark natural pigments.



VETTED BY

CIVILISATIONS



FON ASEN

Benin
Abomey
Estimated period: 19th or early 20th century
Iron
Height 106 cm

Provenance:

- From an American private collection, 1999.



LOBI ANCESTOR'S FIGURE

Burkina Faso
Estimated period: early 20th century
Wood, deep and dark aged patina
Height 74 cm

Provenance:

- From a private collection, UK.

GALERIE FRANK VAN CRAEN

EXHIBITION DURING THE FAIR

Lancz Gallery
15 Rue Ernest Allard
1000 Bruxelles

T. +32 475 66 81 87
E. frankvanraen@outlook.com
W. www.frankvanraen.be
I. @frank_van_craen

'DIEME SOUM' N'DULERI EQUESTRIAN FIGURE

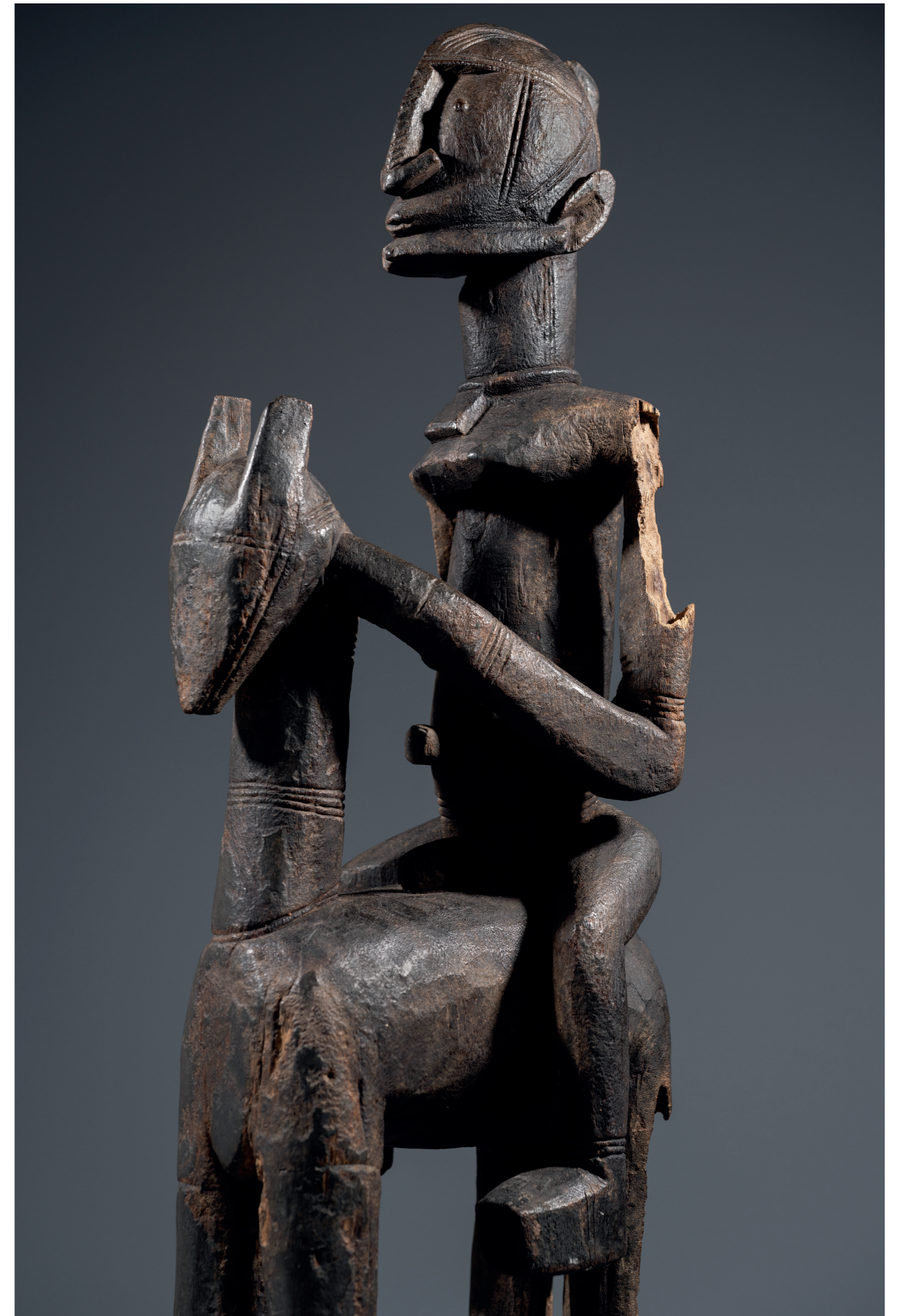
Dogon
Mali
Second half of 18th Century
Height 73 cm
C14 Tested

Provenance:

- Robert Courtois, Brussels, Belgium.
- Dalton Somaré, Milan, Italy, 2009.
- Private collection, Belgium, by descent.

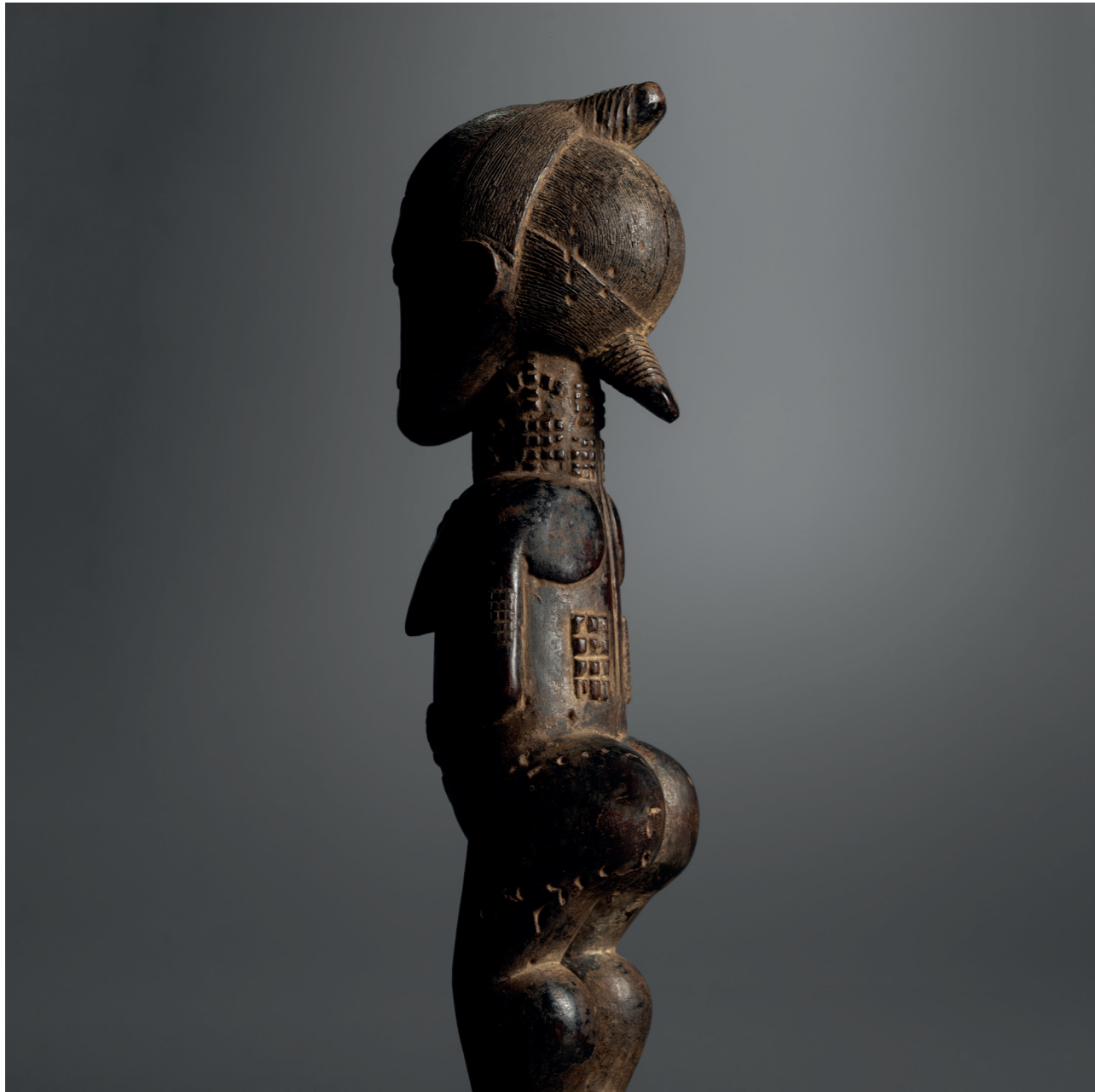
Auction:

- Sotheby's London, 27 June 1994.



VETTED BY

CIVILISATIONS



'BLOLO BLA' FIGURE

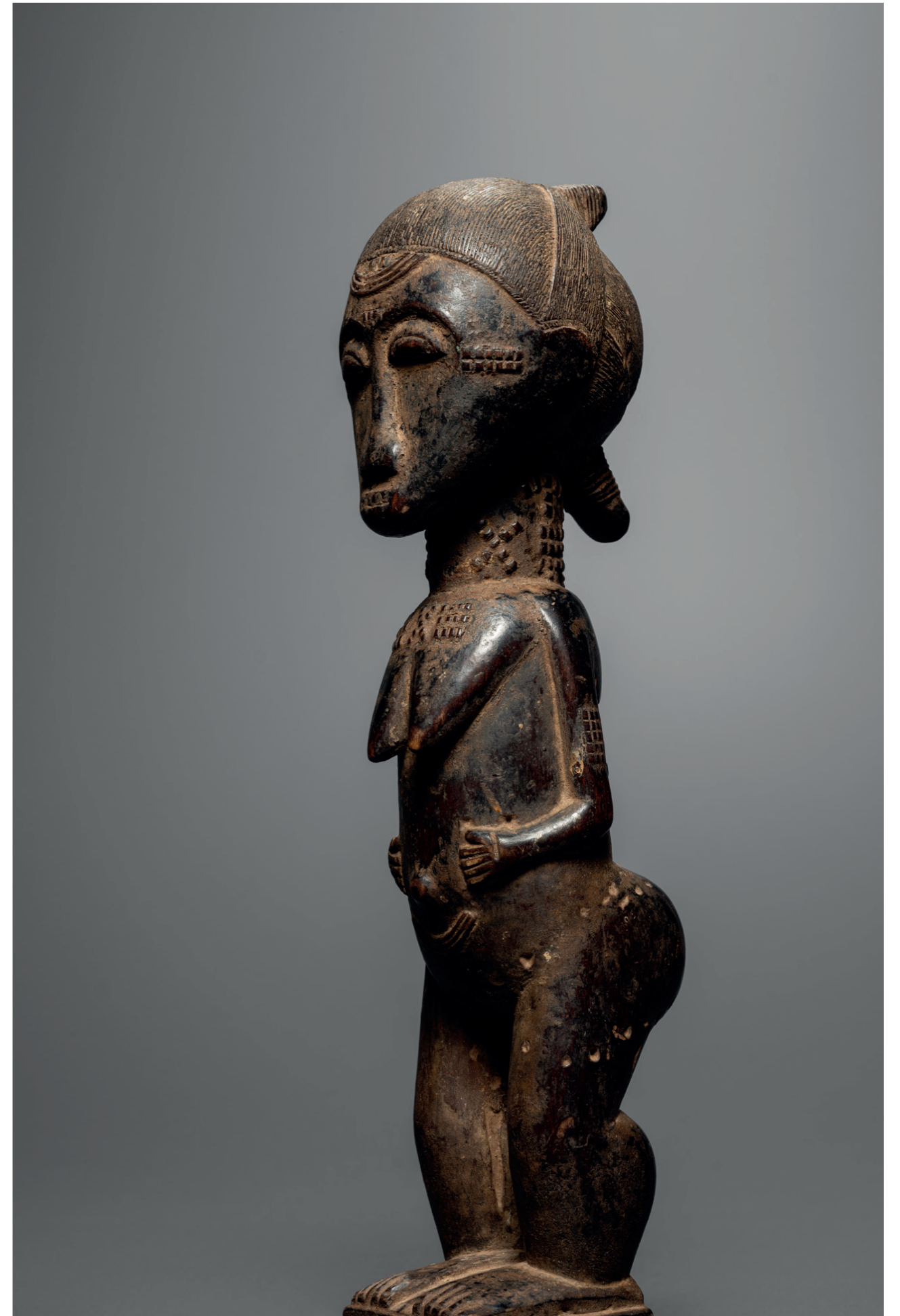
Baulé
Ivory Coast
Height 27 cm

Provenance:

- Acquired by Lucien Van de Velde in Abijan, Ivory Coast, 1964.
- Private collection Lucien Van de Velde, Antwerp, Belgium.

Publication:

- Galerie Frank Van Craen, Exhibition catalogue 'Reborn', 25 November 2023, p. 62.





PAIR OF DOLLS

Bagirmi
Chad
Height 36 cm and 41 cm

Provenance:
• Private collection, Brussels, Belgium.



GALERIE PATRICK & ONDINE MESTDAGH

EXHIBITION DURING THE FAIR

29 Rue des Minimes
1000 Brussels

T. +32 475 46 73 15
E. info@patrickmestdagh.com
W. www.galeriemestdagh.com
I. @galerie_patrick_mestdagh

ELEMA MASK

Papuan Gulf
Papua New Guinea
Tapa, plant fiber frame, pigments
Height 44.5 cm (17^{1/2} in)

Provenance :

- William Oldman Collection (Collection tag "31,131" and "Oldman" on reverse).
- Tepper Auction House, New York.
- Marshall and Caroline Mount Collection, Jersey City, New Jersey.

According to the Oldman online ledgers, item 11310 is listed as a "New Guinea Head Ornament," acquired from Stevens 6 May 1904, then sold to E. Little Cont' on 4 December 1907.

Another collection number "154" written in black ink on the rim.

VETTED BY

CIVILISATIONS



AN IVORY BOA SPOON

Democratic Republic of Congo
19th century
Height 21.5 cm

Certificate 2023/BE03718/CE

Provenance:

- William O. Oldman Collection, 1924, London.
- Roger Bédiat Collection, before 1957, Abidjan.
- Georges Stoecklin Collection (son-in-law of Roger Bédiat), Juan-les-Pins.
- Alain Bovis Gallery, Paris.
- Pierre Dartevelle Collection, Brussels.
- Collection Béatrice and Patrick Caput, Paris.

Publication:

- Alain Bovis, *Congo Mythique*, 2008, p. 74.
- Marc Léo Félix, *White Gold, Black Hands*, vol. 8, 2014, fig. 34.
- Pierre Dartevelle, *Private Collections*, 2015, n° 23.
- Robert Hales and Kevin Conru, *W. O. Oldman. The Remarkable Collector*, 2016, p. 126, fig. 133 (photographed in 1924 by Oldman at his home).
- Patrick Caput and Valentine Plisnier, *Arts d'Afrique. Portraits of a Collection*, 2016, p. 202.

Exhibition:

- Paris, Galerie Alain Bovis, *Congo Mythique*, September 2008.



A PLAINS ROACH SPREADER

Constructed from bone, of widening form
with six pierced openings at the end
United States
Early 20th century
Dimensions: L. 12.7 cm x W. 6.4 cm



GALERIE OLIVIER CASTELLANO

EXHIBITION DURING THE FAIR

L'Ancienne Nonciature
7 Rue des Sablons
1000 Brussels

T. +33 6 11 21 25 22
E. info@oliviercastellano.com
W. www.oliviercastellano.fr
I. @olivier.castellano

PENDE MASK

Democratic Republic of Congo
Height 28 cm

Provenance:

- The Detroit Institute of Arts, Detroit, Michigan, inv. 68.146; Acquired 1968.
- Didier Claes 2018.
- American collection.

Publication:

- Woods (Willis F), A Check list of African Art in the permanent collection of the Detroit Institute of Arts. The Detroit Institute of Arts, 1971, p. 29.
- Kan Michael, Detroit Collects African Art, Detroit. The Detroit Institute of Arts, 1977, p. 155.
- Contact, Galerie Didier Claes, September 2018, n° 10.

VETTED BY

CIVILISATIONS





DOGON STATUE

Mali
Height 29 cm

Provenance:
• Belgian collection.



BAMILEKE ELEPHANT MASK

Babanki style
Cameroon
Height 94 cm

Provenance:
• German collection.

GALERIE PUNCHINELLO

EXHIBITION DURING THE FAIR

Chambre Royale des Antiquaires Belges
32 Rue Ernest Allard
1000 Brussels

T. +33 6 03 01 66 01

E. punchinello@wanadoo.fr

W. www.punchinello.fr

I. [@galerie_atelier_punchinello](https://www.instagram.com/galerie_atelier_punchinello)

VETTED BY

CIVILISATIONS

CANOE PADDLE

Solomon Islands
Early 20th century
Wood with natural pigments





WEAVING LOOM PULLEY

Shan States
Burma
19th century



BIRD-HEADED CLUB

Porowa Ra Maru
New Caledonia
Kanak people
19th century

GRAZIELLA SEMERCIYAN GALLERY

EXHIBITION DURING THE FAIR

Curated exhibition: Ceremony

Dei Bardi Art
12 Rue Watteeu
1000 Brussels

+33 6 67 36 65 40
E. contact@graziellasemerciyan.com
W. www.graziellasemerciyan.com
I. [@graziella_semerciyan_gallery](https://www.instagram.com/graziella_semerciyan_gallery)

MINO RAIN COAT

In woven and knotted rice straw with
alternating bands of coloured textiles
on the collar
Japan
Dimensions: H. 110 cm x W. 45 cm



VETTED BY

CIVILISATIONS



LARGE HINOKI VASE

Japan
Showa Era
Dimensions: H. 39.5 cm x D. 30 cm



HANAKAGO

Tanabe Chikuunsai II (1910-2000), signed original Tomobako
Japan
Circa 1960
Dimensions: H. 16 x W. 55 cm x D. 14 cm
Exhibition flyer enclosed, Spring 1961.
Made of madake bamboo, rattan and lacquer

GREGG BAKER ASIAN ART GALLERY

EXHIBITION DURING THE FAIR

(By appointment)
7 Place du Samedi
1000 Brussels

T. +32 468 00 56 85
E. info@japanesescreens.com
W. <http://japanesescreens.com>
I. @greggbakerasianart

ISHII SEISHI
(1899-1984)

A two-fold lacquer screen depicting a persimmon tree in gold, silver and various coloured *taka-maki-e* (high-relief lacquer) against a dark orange ground.

Signed: *Seishi saku* (made by Seishi)

Japan, 1942

Dimensions: H. 120 cm x W. 117 cm (47¼" x 46")

The *tomobako* (original wood box) is signed *Ishii Seishi saku* (made by Ishii Seishi), sealed *Seishi*, and inscribed *Showa junana nen no Bunten shuppin* (exhibited at the Bunten exhibition in 1942).

Exhibited:

- The 5th Shin-Bunten Exhibition (The 4th Section, Arts and Crafts division), 1942, no. 18.

Published:

- *Nitten-shi hensan iinkai* (The committee to compile the history of Nitten exhibitions) ed., *Nittenshi* (History of Nitten Exhibitions) vol. 15 (Shin-Bunten Exhibitions III), (Tokyo, 1985), p. 196, 205, no. 18.

VETTED BY

CIVILISATIONS



A WOOD KYŌGEN MASK OF OTO (OTAFUKU)

Japan 15th century Muromachi period

Inscribed:

Fukurai saku (made by Fukurai) and Mitsunao with *kao* (cursive monogram)

Dimensions: H. 18 cm x W. 15 cm x D. 17 cm (7" x 6" x 6¾")

Fukurai (act. late 14th to 15th centuries) was a master mask maker of the Muromachi period (1333-1573) from the Echizen region (present-day Fukui prefecture). There are several theories who Fukurai was – it is said that the Noh mask master Fukurai Ishiobyoe Masatomo was his full name; another theory suggests that Fukurai and Ishiobyoe were two separate Noh mask makers. In some records, Fukurai is counted as one of *Rokusaku* (six masters of mask making of the time, who were identified and selected by later generations).

During the medieval period, masks were rarely signed or sealed – most of the surviving examples by the old masters were authenticated by later masters, as with this example. On this present Kyogen mask, the attestation on the reverse is by Deme Mitsunao (d. 1750, artist name Hokan, the sixth generation of the Ono Deme Family) from the mid-Edo period. The Ono Deme family continuously produced Noh masks from the Momoyama period (16th century) and was one of three main hereditary Noh mask carvers from 16th to 19th century: Echizen Deme family, Omi Iseki family and Ono Deme family.

Kyogen theatre (lit. wild words) is thought to stem from Sarugaku, a form of Chinese entertainment brought to Japan around the 8th century. It was a popular form of entertainment which included elements like mime, acrobatics and magic encompassing both drama and comedy. By the 14th century, these contradictory forms of Sarugaku had become known as Noh and Kyogen, respectively.

The mask of Oto (also called Otogoze, Otafuku and Okame, etc.) represents a young woman wearing a smiling, cheerful expression with large full cheeks. The origin of this mask character Oto is considered as Amenouzume, a goddess and the oldest dancer in Japanese mythology. Throughout the long history of Kyogen, the mask Oto has been used in various plays, as an auspicious woman (a lucky goddess), a demon princess or an ugly woman, depending on the stories or periods.

For more about the artist, see Nakanishi Toru and Konma Kiyonori, *Nohmen* (Noh masks), (Osaka, 1981), p. 136.

For other examples by the same artist, see:

- Mitsui Memorial Musuem ed., *Mitsui Kinen Bijutsukan shozo, kyu Kongo soke denrai nohmen* (Noh masks previously in the collection of the head family of Kongo School, housed in the collection of the Mitsui Memorial Musuem), (Tokyo, 2008), p. 98-99, no. 32.
- *Kongo Noh-gakudo* (The Kongo Noh Theatre) ed., *Kongo soke no nohmen to nohshozoku* (Noh masks and costumes in the collection of the head family of Kongo School), (Kyoto, 2018), p. 52, 116, 131, n° 45.
- Toru Nakanishi, *The Beauty of Noh*, (2001, Hyogo), p. 41, 72, no. 39.



A PAIR OF SIX-FOLD SCREENS WITH APPLIED TANZAKU (POEM SLIPS)

From the 17th century

Each poem slip executed by a court noble or priest of imperial lineage. They rest against a background of wavy horizontal lines in purple and blue, dispersed with *sunago* 'clouds' (sprinkled gold dust). The boarder of this pair of screens is of particular interest as it is from an antique kimono textile with a design of sails. The screens were mounted by Nakagawa Chinkai of Kyoto.

Ink, colour and gold on paper

Poem slips 17th century Edo period; screens mounted in 1937

Dimensions: H. 107 cm x W. 277 cm (42¼" x 109") each

Tomobako (original box): dated September 1937, signed *Nakagawa Chinkai* and sealed *Chinkai*

Tanzaku are rectangular sheets of paper used for calligraphic poems or paintings. Since the mid-Heian and Kamakura periods, such papers, termed *shikishigata*, were inscribed with poetic calligraphy and attached to screens or sliding door panels. Often these slips are highly decorated with gold or silver cut into small pieces or sprinkled like mist or finely painted with various motifs, as exemplified by the current example.

Poems on this pair of screens, referring to the seasons and nature, were written by *kugyō* (court nobles) and *monzeki* (priests of imperial lineage) from the 17th century, early Edo period (1615-1868).

Poets on the right screen (from right):

Minase Ujinari (1571-1644, court noble)

Kawabata Sanetsura (1635-1706, court noble)

Ōgimachi Kinmichi (1653-1733, court noble)

Manshuin Ryōshō (1623-1693, head priest of Manshuin temple, Kyoto)

Washino Takakazu (1606-1662, court noble)

Takenaka Sueari (act. 17th century, court noble)

Takakura Nagataka (1615-1681, court noble)

Takenouchi Koretsune (1636-1704, court noble)

Hiramatsu Tokitsune (1599-1654, court noble)

Chigusa (unknown)

Reizen Tametsune (1654-1722, court noble)

Poets on the left screen (from right):

Higuchi Nobutaka (1600-1658, court noble)

Itsutsuji Toshinaka (1629-1657, court noble)

Uramatsu Sukekiyo (1626-1667, court noble)

Nakamikado Nobuyori (1613-1664, court noble)

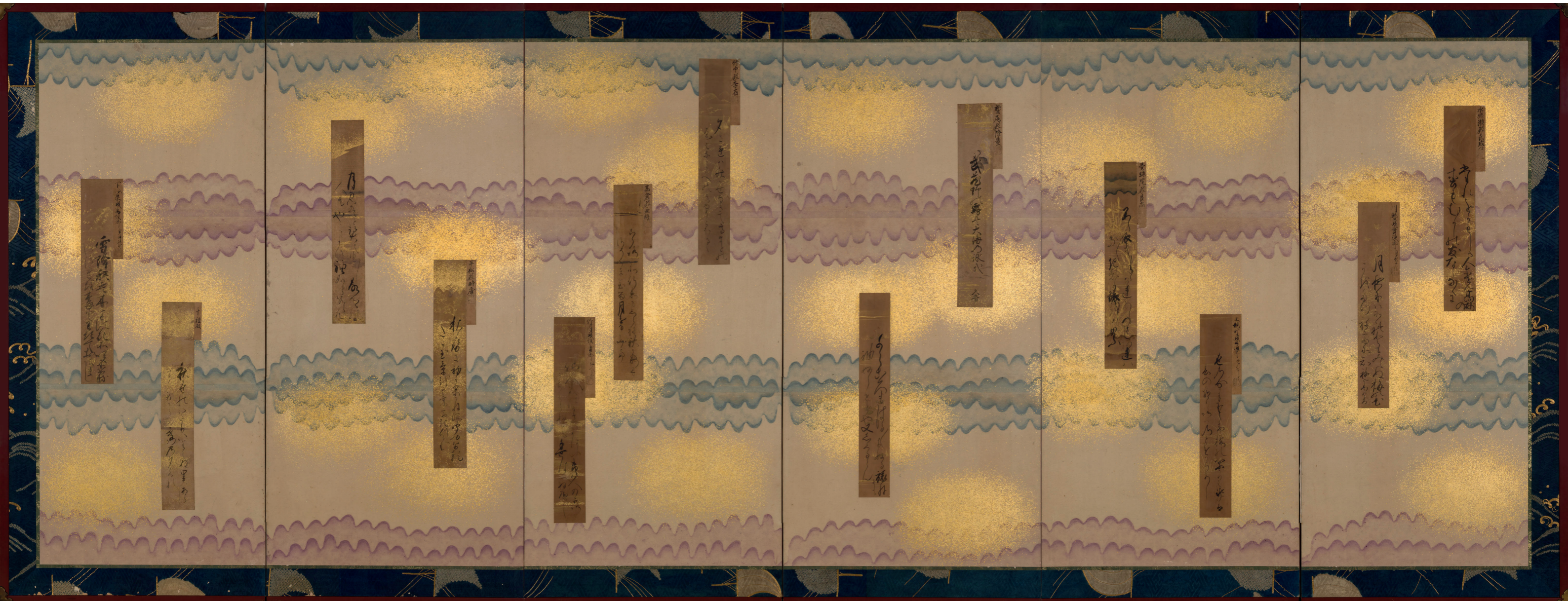
Sanjōnishi Sanenori (1619-1701, court noble)

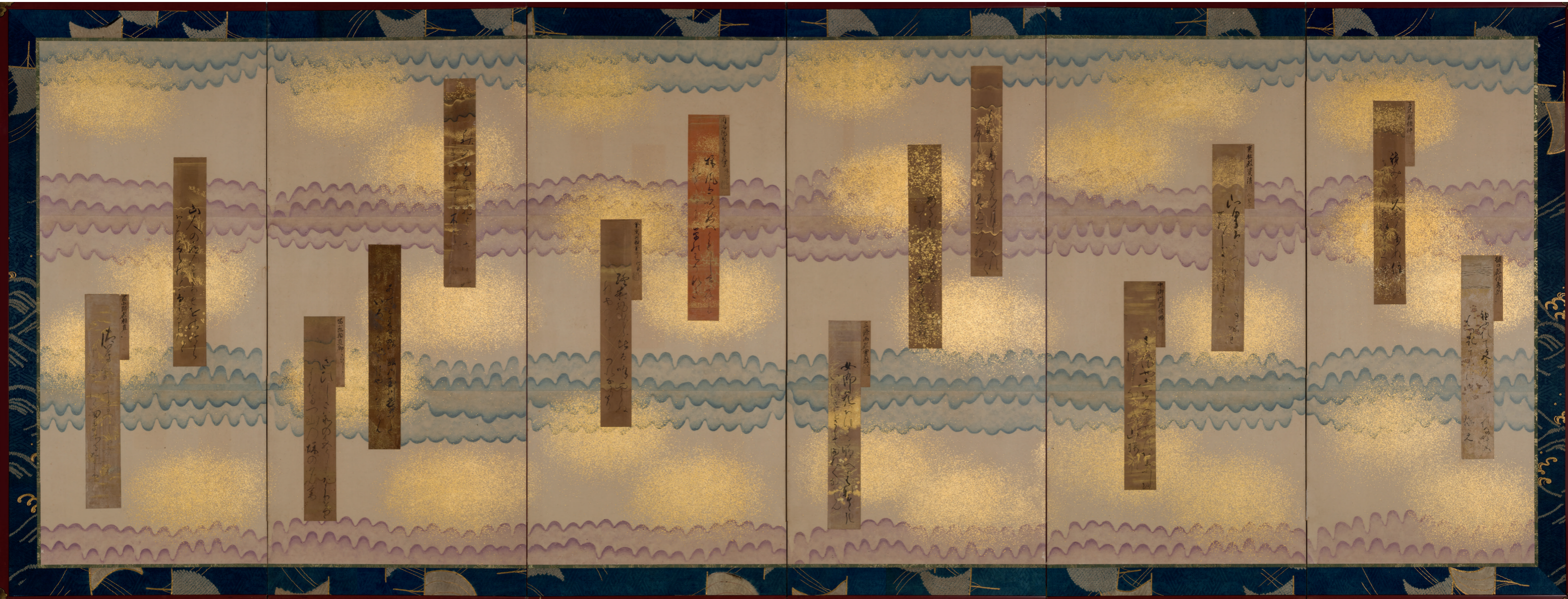
Enmanin Jōson (1604-1671, head priest of Enmanin temple, Shiga)

Hamuro Yorinari (1615-1675, court noble)

Tominokōji Yorinao (1613-1658, court noble)







GRUSENMEYER-WOLINER GALLERY

EXHIBITION DURING THE FAIR

17 Rue des Minimes
1000 Brussels

T. +32 2 514 03 37
E. info@grusenmeyer-woliner.com
W. <https://grusenmeyer-woliner.com>
I. @grusenmeyerwoliner

FIGURE OF A BUDDHA

North Thailand
Chiang Saen Style
14th century
Bronze
Height 71 cm

VETTED BY

CIVILISATIONS

Image courtesy of Studio Asselberghs, Frédéric Dehean





PLAQUE WITH AN ANTHROPOMORPHIC FIGURE

Gaynsky District
Perm Krai
Cis-Urals
5th century BC - 3rd century AD
Bronze
Dimensions: W. 9.5 cm x H. 12.6 cm

Publication:
GRUSENMEYER-WOLINER GALLERY. (2023). Frozen Magic: The Ancient Art of Siberia.
Edited by Kassou Grusenmeyer, Written by Boris Erenburg, André Verstandig, Kassou
Grusenmeyer. Brussels: Grusenmeyer-Woliner, pp. 54-55.

Image courtesy of Studio Asselberghs, Frédéric Dehean



FIGURE OF A WINGED BEAR

Upper Kama River Basin
Perm Krai
Cis-Urals
6th - 10th century
Bronze
Height 15.3 cm

Publication:
GRUSENMEYER-WOLINER GALLERY. (2023). Frozen Magic: The Ancient Art of Siberia.
Edited by Kassou Grusenmeyer, Written by Boris Erenburg, André Verstandig, Kassou
Grusenmeyer. Brussels: Grusenmeyer-Woliner, pp.114-115.

Image courtesy of Studio Asselberghs, Frédéric Dehean

JO DE BUCK TRIBAL ARTS

EXHIBITION DURING THE FAIR
Curated exhibition:
African Sculptures and Textiles

SR Gallery
37 Rue Ernest Allard
1000 Brussels

+32 475 84 17 29
E. jdbtribalarts@gmail.com
W. www.jodebuck.com
I. @jodebucktribalarts

MUMUYÉ

Nigeria
Height 93 cm

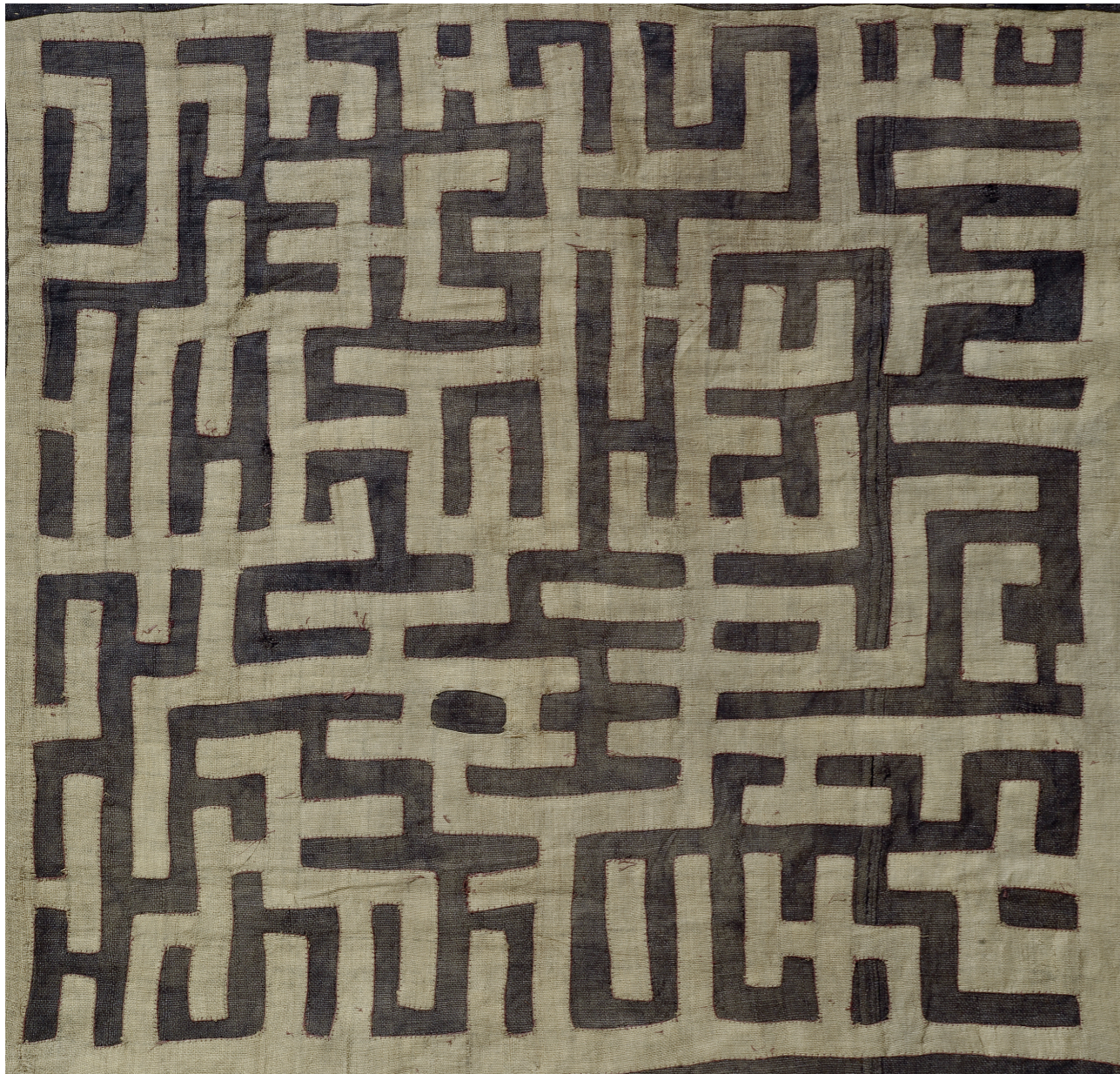
Provenance:

- Collected in Garoua, Cameroon, in 1970 by Mr. Roland Grillot, Director Renault in West Africa.
- Galerie Pierre Robin.
- Private French collection.



VETTED BY

CIVILISATIONS



KUBA NGONGO TEXTILE

Loincloth called Ntshak
Democratic Republic of Congo
First half 20th century
Raffia patchwork
Dimensions: W. 75 cm x L. 236 cm



KUBA SHOOWA APRON

Democratic Republic of Congo
Early 20th century
Raffia
Dimensions: W. 57 cm x L. 130 cm

JOAQUIN PECCI TRIBAL ART

EXHIBITION DURING THE FAIR

L'Ancienne Nonciature
7 Rue des Sablons
1000 Brussels

T. +32 477 43 94 12
E. E. joaquin.pecci@skynet.be
W. www.joaquinpecci.net
I. @joaquin.pecci

VETTED BY

CIVILISATIONS

DAN MASK

Ivory Coast
Wood
Height 22 cm

Provenance:

- Private Belgian collection.





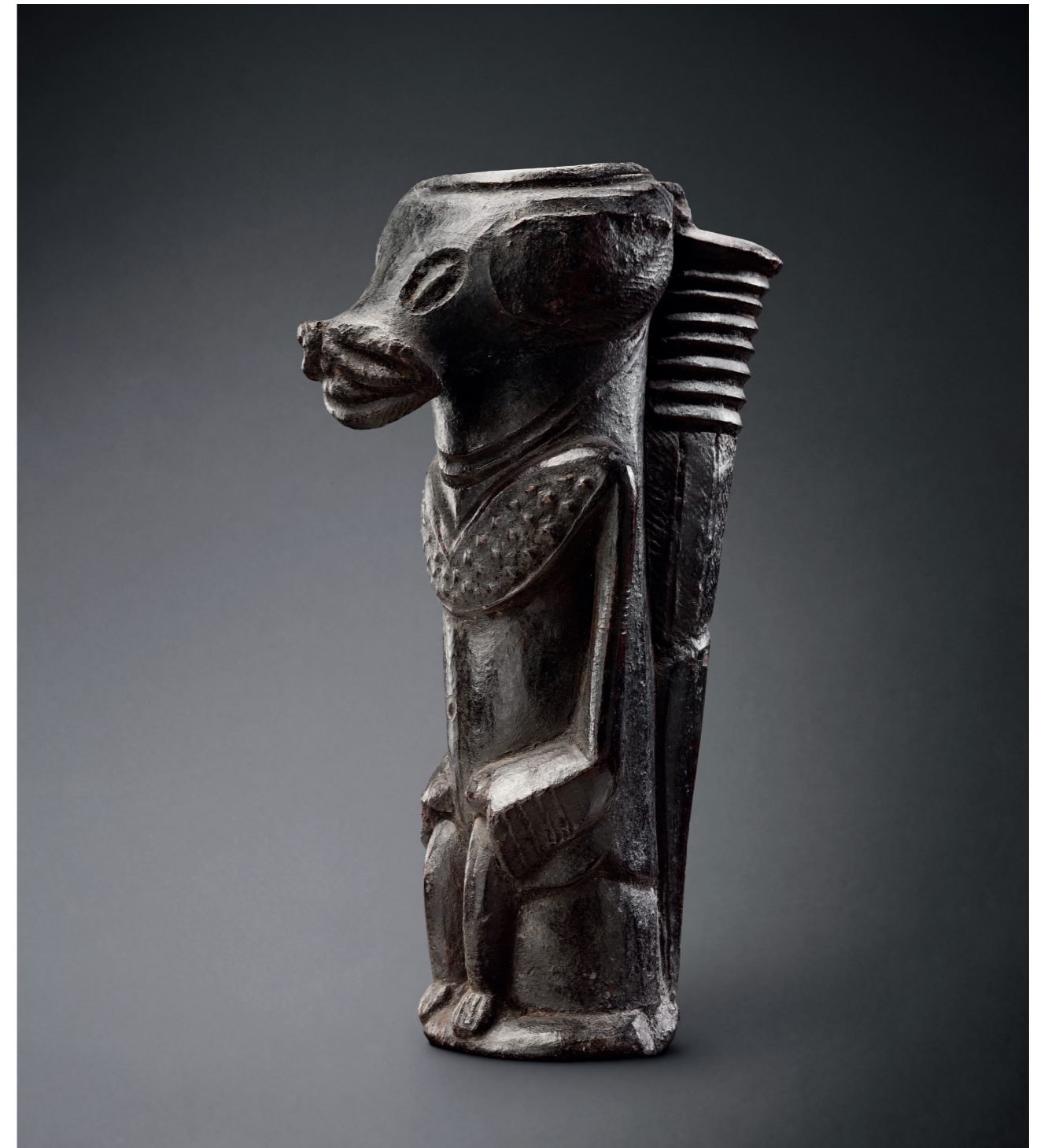
SENUFO RIDER

Ivory Coast
Wood
Height 33 cm

Provenance:

- Franco Monti
- French private collection

Exhibited in Darmstadt, Germany in 1967.



GRASSFIELDS ZOOMORPHIC PIPE

Cameroon
Terracotta
Height 26 cm

Provenance:

- Old European collection.

KITSUNE JAPANESE ART

EXHIBITION DURING THE FAIR

55 Rue des Minimes
1000 Brussels

T. +32 476 87 85 69
E. japanese.art@kitsune.be
W. www.kitsunegaroo.com
I. [@kitsune_japanese_art](https://www.instagram.com/kitsune_japanese_art)

LACQUER JUBAKO
(tiered food container)
Unsigned
Japan
Meiji-period (1868 – 1912)
Height 23 cm

This lacquered wood jubako for presenting food during special occasions simulates an iron furogama (a tea ceremony set consisting of a brasero and kettle).

An absolutely exceptional artwork in terms of shape and lacquering technique (sabi urushi). This masterpiece of trompe l'oeil comes with a storage box.

Image courtesy of Thomas Lancz



VETTED BY

CIVILISATI**ONS**



MADARA KARATSU FOOD SERVING TRAY WITH KINTSUGI.

Dimensions: W. 30 cm x H. 9.5 cm

Karatsu is a city located in Saga Prefecture on the island of Kyūshū. Its name, formed from the Japanese word roots 唐 kara (China, or continental East Asia in general), and 津 tsu (port), signifies its historical importance as an ancient trading port between Japan with China and Korea. It also stands as a generic name for the ceramic wares made in this area.

Fired in noborigama (climbing kilns), Karatsu ware is made from reddish and brown clays high in iron. Here we have a large tray shaped as an abalone shell. The type of glazing used, is referred to as "madara" (mottled Karatsu) dating back to the first half of the Edo-period (1603-1868).

It has a wonderful 19th century kintsugi repair confirming its importance. As a general rule, the repaired artifact acquires far higher value and enjoys greater appreciation.

Image courtesy of Thomas Lancz



JAPANESE CERAMIC TEA CONTAINER (CHAIRE)

By kato Shuntai (1802-1877)
Height 8.5 cm

A rare / uncommon setoyaki (Seto ware) chaire with "chosengaratsu" style glazing made ca 1850. The ceramic lid (normally ivory or bone) glazed in the same manner as the container is extremely rare for tea items dating back to the Edo-period. Marked at the bottom.

Image courtesy of Thomas Lancz

OLIVIER LARROQUE

EXHIBITION DURING THE FAIR

Peep Art Gallery
33 Rue des Minimes
1000 Brussels

T. +33 6 800 800 93
E. o.larroque1@gmail.com
W. <https://olivierlarroque.com>
I. @olivierlarroque

MASK DAN MANO

Liberia
Wood
Height 9.8 cm
Presumed Period: late 19th to early 20th century

Provenance:

- Private Collection, France.
- Merton Simpson Collection, New York.
- Marceau Rivière Collection, Paris.



VETTED BY

CIVILISATIONS

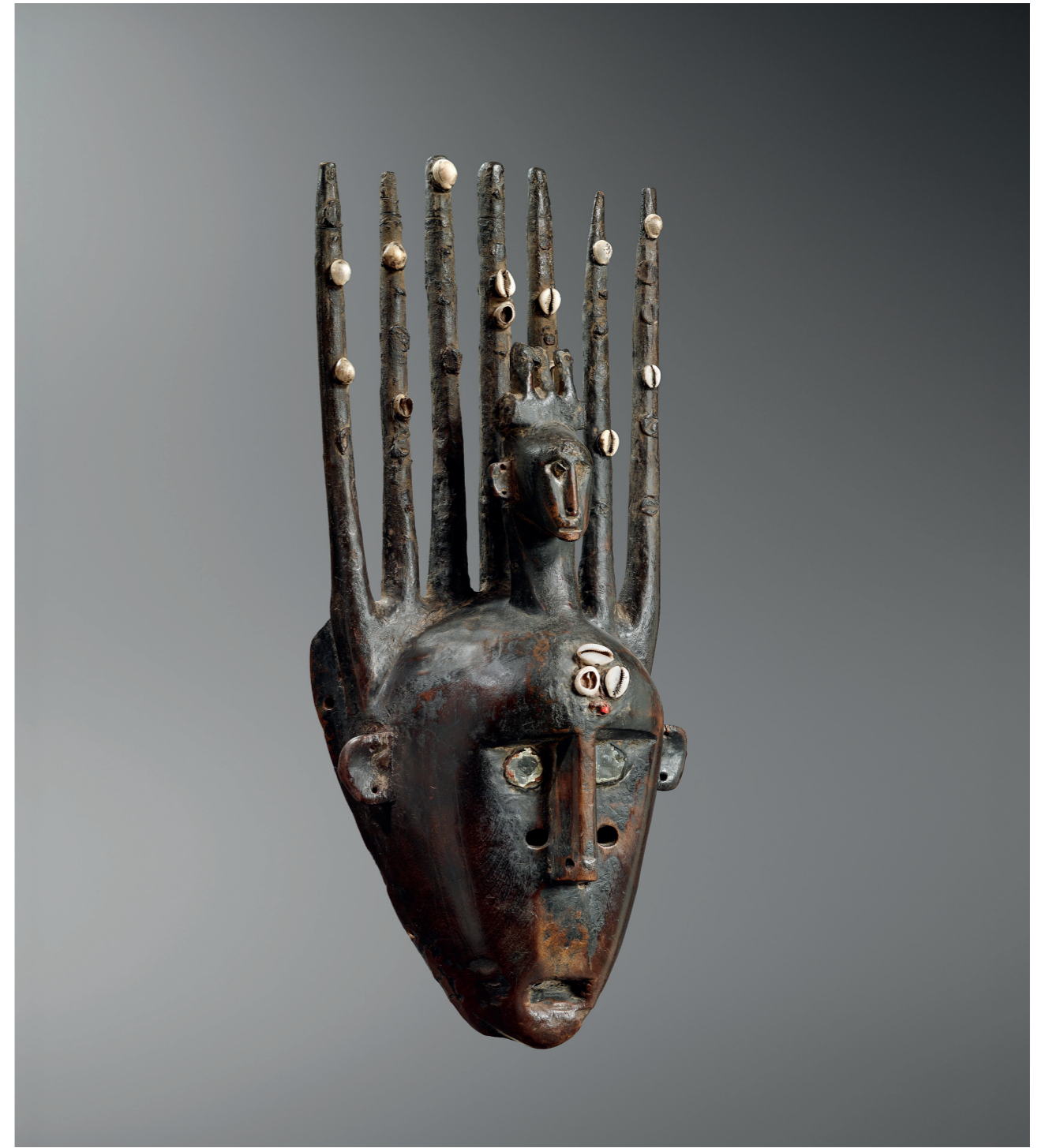


FANG STOOL

Gabon
Wood, nails
Diameter 29 cm
Presumed period: 19th century

Provenance:

- Colonial collection, France.
- Private collection, by descent, France.



BAMANA MASK

Mali
Wood, cowrie shells, seeds, glass
Presumed period: late 19th to early 20th century
Height 64.5 cm

Provenance:

- Private collection, France.

RAPHAEL SEVETTE

EXHIBITION DURING THE FAIR

SR Gallery
22 Rue Watteeu
1000 Brussels

T. +41 77 9778220
E. raphaelsevette@gmail.com

VETTED BY

CIVILISATIONS

ZANDÉ MASK

Democratic Republic of Congo

Provenance:

- Alain Guisson, Brussels.

Image courtesy of Petr Zubek





SEPIK NECKREST

Papua New Guinea
19th century

Provenance:

- Lorenz Eckert, Basel.
- Adrian Schlag, Ibiza.

Image courtesy of Petr Zubek



DOGON ATTIC SHUTTER

Mali
Village of Toupéré
Bandiagara cliff
19th century or earlier

Provenance:

- Renaud Vanuxem, Paris.

Image courtesy of Petr Zubek

VOYAGEURS & CURIEUX

EXHIBITION DURING THE FAIR

L'Ancienne Nonciature
7 Rue des Sablons
1000 Brussels

T. +33 6 74 53 78 79
E. carlier.jean-edouard@wanadoo.fr
W. www.voyageursetcurieux.com
I. @voyageursetcurieux2

ANCESTOR FIGURE

Boiken people
Prince Alexander Mountains
Papua New Guinea
Melanesia
Wood and pigments
Height 105 cm

Provenance:

- Private collection Surry Hills, Sydney, Australia.

Image courtesy of Hughes Dubois



VETTED BY

CIVILISATIONS

ANCESTOR FIGURE

Tabar Islands
North East of New Ireland
Bismarck Archipelago
Melanesia
Wood (*Alstonia scholaris*), opercules (*Turbo petholatus*) and pigments
Height 117 cm

Provenance:

- Private collection Surry Hills, Sydney, Australia.

Image courtesy of Hughes Dubois



ANCESTOR FIGURE

Malekula Island
Vanuatu Archipelago (ex: New Hebrides)
Melanesia
Bamboo, vegetable paste, pig tusk, pigments and fibers
Height 68 cm

Provenance:

- Collected by Louis de Marcé between 1853 and 1854.

Image courtesy of Hughes Dubois



RENAUD VANUXEM

EXHIBITION DURING THE FAIR

L'Ancienne Nonciature
7 Rue des Sablons
1000 Brussels

T. +33 6 07 11 50 60
E. rvanuxem@yahoo.fr
W. www.renaudvanuxem.com
I. @galerie_renaud_vanuxem

VETTED BY

CIVILISATIONS

ALTAR "GBEKRE" MONKEY

Baoule
Ivory coast
Wood
Sacrificial patina
Native metal repairs
Height 62 cm





RITUAL HELMET CAP

Senufo
Ivory coast
Wood
Height 31 cm

Provenance:
• Private European collection.



CEREMONIAL MASK

Dan
Ivory coast
Wood
Height 26 cm

Provenance:
• Galerie Lecorneur-Roudillon (50's).

ZUBEK GALLERY

EXHIBITION DURING THE FAIR

SR Gallery
22 Rue Watteeu
1000 Brussels

T. +49 1523 1064 749
E. petr@zubek-gallery.de
W. www.zubek-gallery.de
I. @zubek_gallery

DAN MASK (DEANGLE)

Ivory Coast
Early 20th century
Height 24 cm

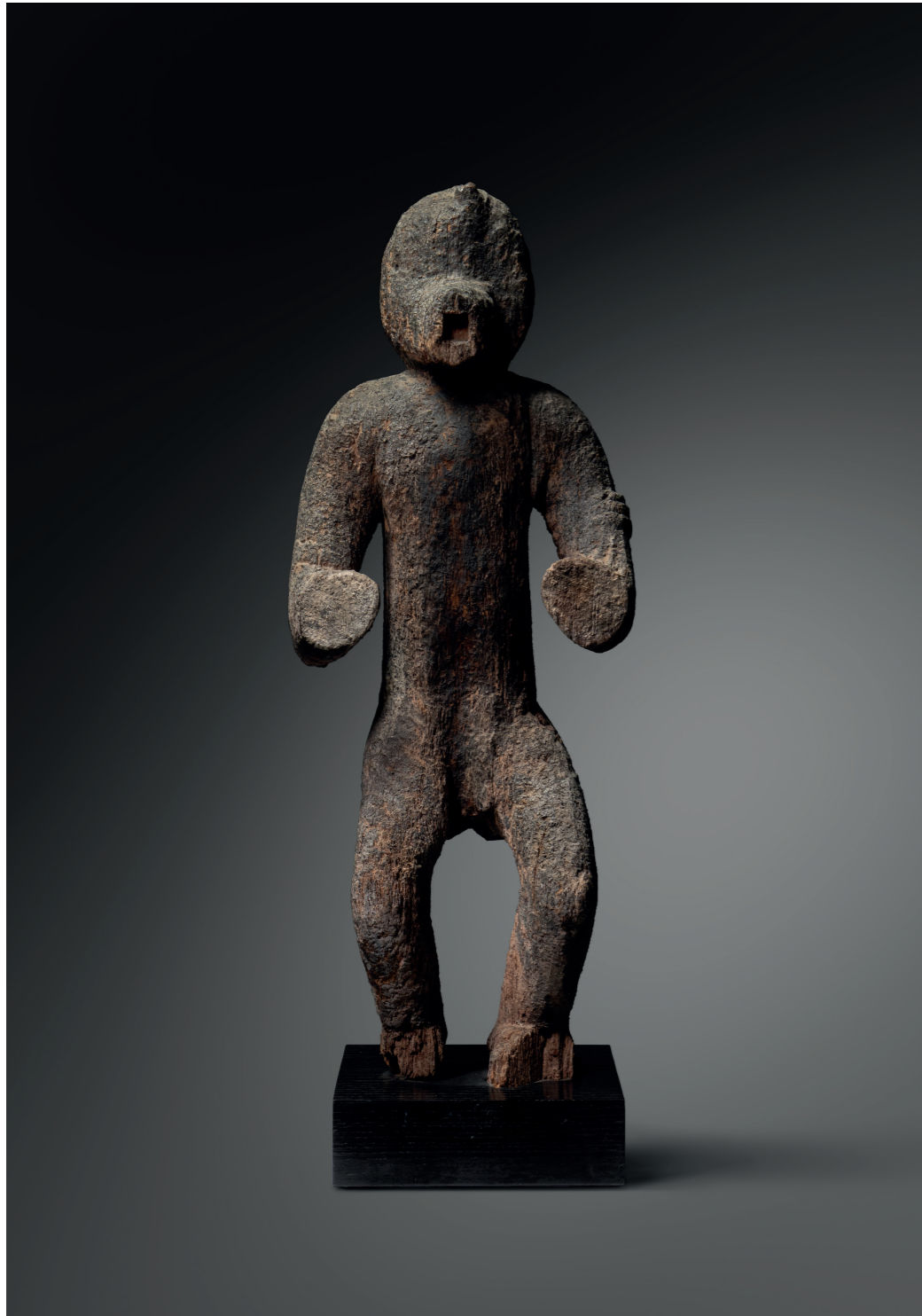
Provenance:

- Luc & Ann Huysveld - De Pauw, Belgium.
- Renaud Vanuxem, Paris.



VETTED BY

CIVILISATIONS



BAULE FETISH FIGURE (MBOTUMBO)

Ivory Coast
Early 20th century
Height 52 cm

Provenance:

- Marceau Rivière, Paris.
- Javier Lentini, Barcelona.
- David Serra, Barcelona.



DAYAK (NGAJU) FIGURE

Borneo
Indonesia
19th century or earlier
Height 160 cm

Provenance:

- Bruce Frank, New York.
- Drs. Noble and Jean Endicott, New York.
- Marc Assayag, Montreal.

*Prix incluant l'abonnement 1 an (11 numéros) et les frais de port à destination de la Belgique, soit 21% de remise par rapport à la vente au numéro en Belgique.



VOTRE MAGAZINE POUR EXPLORER TOUS LES ARTS

OFFRE SPÉCIAL SALON

~~93,40€~~ **77,40€ SEULEMENT!**



RENDEZ-VOUS SUR WWW.LOEIL.FR @MAGAZINELOEIL @LEMAGAZINELOEIL

ORIENTATIONS

Orientations has been an authoritative source of scholarly research, news, and market analysis on the arts of East and Southeast Asia, the Himalayas, the Indian subcontinent and the Middle East since 1969 and is an essential addition to any art library.

1 year (6 issues)
HK\$700 (local delivery)
US\$105 (overseas surface mail)
US\$155 (overseas airmail)

2 years (12 issues)
HK\$1,350 (local delivery)
US\$198 (overseas surface mail)
US\$298 (overseas airmail)

Surface mail delivery takes approx. six months.
Airmail delivery normally takes 14-21 days.

Purchase a new or renewal print subscription and enjoy a complimentary digital subscription.

For more information, please visit <http://www.orientations.com.hk>

OM PUBLISHING

OM Publishing is the custom book-publishing arm of Orientations Magazine Ltd, with expertise from five decades of editing, designing and printing *Orientations* to the highest of standards. We are highly sought after by Asian art collectors, dealers and museums to produce a range of scholarly publications, including catalogues, monographs and artist books. Created in collaboration with some of the most respected authors in the field, our titles are important sources of information for curators, scholars, students and art lovers alike.

Please contact us at info@orientations.com.hk for all your publishing needs.



www.ompublishinghk.com

Unit 1501, 15/F, M Place, No. 54 Wong Chuk Hang Road, HK
T: +852 2511 1368 F: +852 2507 4620

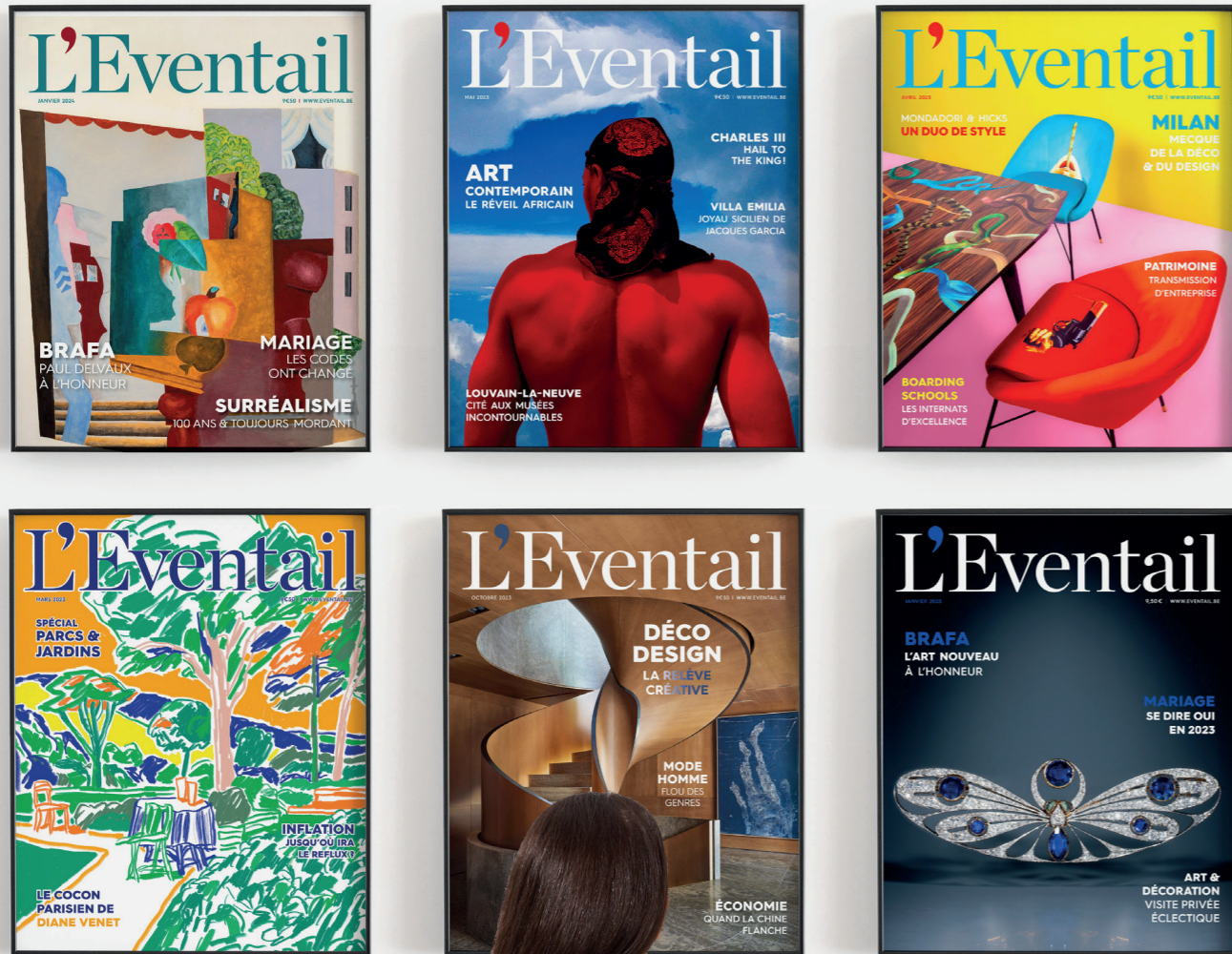


www.orientations.com.hk

Vivez l'art de chez vous

TRIBAL ART MAGAZINE

Abonnez-vous !



ABONNEZ-VOUS !

www.eventail.be/abonnement



www.tribalartmagazine.com

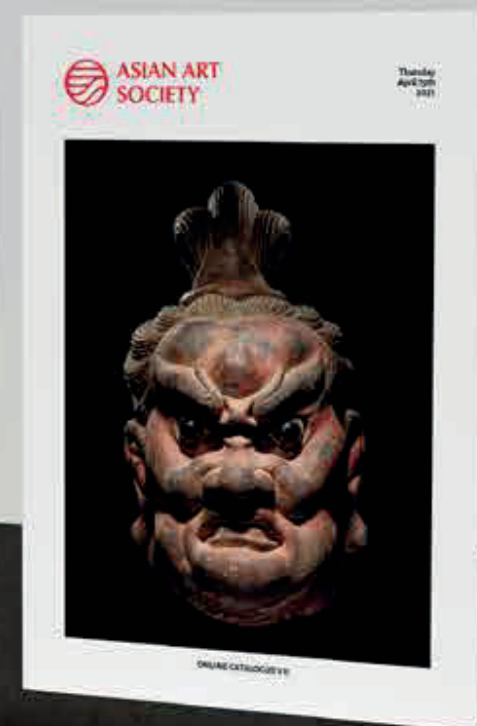


The Asian Art Society features an online catalogue every month listing quality works of Asian art that have been thoroughly vetted by our select members, who are the in-house experts. There is no cost to subscribe.

www.theasianartsociety.com



Discover artworks from World Renowned Galleries. Own a Piece of History with Serious Guarantees.



FREE SUBSCRIPTION
tribalartsociety.com/subscribe
theasianartsociety.com/subscribe

FOLLOW US @
[/tribalartsociety](https://www.instagram.com/tribalartsociety)
[/asianartsociety](https://www.instagram.com/asianartsociety)
[/worldartsociety](https://www.instagram.com/worldartsociety)

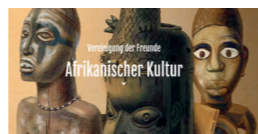


Tribal Art on YouTube

www.youtube.com/c/aboutafrica_and_the_rest_of_the_world



The channel of a German art lover,
powered by



CIVILISATIONS

